



# ENERGY MICROMETER

*Energy-consumption mapping*



The most compact and accurate meter for train energy-consumption mapping

Our Energy Micrometer is the perfect solution to accurately measure energy consumption across multiple subsystems in trains.

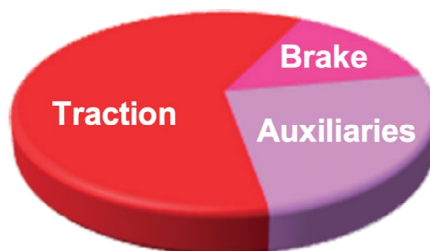


## PRODUCT FEATURES

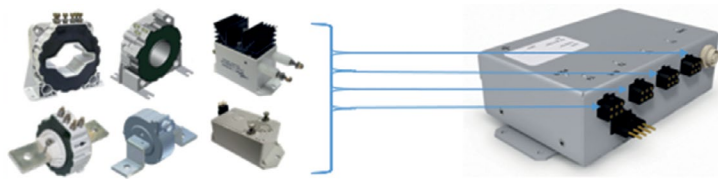
- Ultra-compact 4 input channel energy meter
- Single-phase or multi-phase, AC/DC
- Auxiliary power supply integrated for sensors
- Compliant with all relevant rail directives
- Ethernet / RS485 communication / option MVB

## CUSTOMER BENEFITS

- Complete, accurate overview of energy consumption
- Provides data for energy management, savings, and maintenance
- Easy installation



**COMPLETE SOLUTION PORTFOLIO FOR  
EASY INTEGRATION ON ROLLING STOCK**



**Class 0,5R**  
Energy cosumed/regenerated  
every second

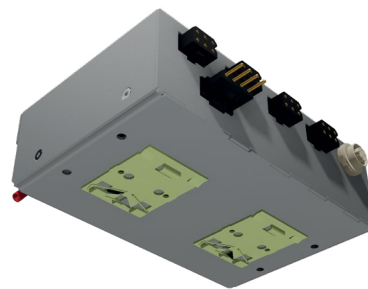
**SPECIFICATIONS**

Hall effect sensors  
AC & DC measurement  
MSV voltage sensor, 950 - 5000 VAC/DC  
MSA current sensor, 100 - 2000 AAC/DC  
Closed loop system  
Overall accuracy MSA  $\pm 0.5\%$ , MSV  $\pm 1\%$   
Linearity  $<0.1\%$   
Operating temperature  $-50\text{ }^{\circ}\text{C}$  to  $+85\text{ }^{\circ}\text{C}$   
Auxiliary supply  $\pm 15\text{ VDC}$  or  $\pm 24\text{ VDC}$

4-input energy meter  
100 V; 100 mA; 5 A; 1 A compliant  
Up to 3 calculation channels Compliant with 3-phase  
Class 0.5R energy calculation every second Energy  
consumed/regenerated, active/reactive Digital output  
Ethernet 10/100M  
RS485  
MVB option  
Including  $\pm 15\text{ VDC}$  power supply on each channel Full  
range 24-110 VDC general power supply



**Panel Fixation**



**35mm Rail Fixation**

**CONTACT**

**Wabtec Corporation**  
Darwinstraat 10,  
6718 XR Ede, Netherlands  
Phone: +31 (0)88 600 4500  
Email: wnl\_salesupport@wabtec.com

**WABTECCORP.COM**