

# XT-35M-DCL1 relay - Twilight switch with digital time, 1 C/O, 8 A

## Datasheet



### Description

The XT-35M-DCL1 is a single channel, 2-module wide with an external light sensor (included) which is suitable for panel or wall mounting.

It is used for based on the illumination and real time controlling to switch according a program (AUTO) / permanently manual / random (CUBE). With the advantage of the built-in real time clock a blocking function of a twilight switch is adjustable in case a lights is not economical to be in use (for example at night, weekends, etc.).

With the function 'random switching' a situation can be simulated of presence in a house when nobody is at home.

### Application

Twilight switch relay with digital time clock, suitable for control of lights. (for example shop, faced or advertising lighting)

### Features

- 1 channel individual output
- Adjustable light intensity 1...5000 lux
- External wall / panel mounting sensor
- 100 memory places
- 1 C/O contact 8 A / AC1
- 35 mm rail mounting
- Transparent cover
- Supply voltage 230 VAC
- Modular housing, 2 modules
- Power back-up for 3 years
- Clear LCD display

### Benefits

- Rated current 8 A / AC1
- Long term availability
- 35.6 mm wide
- No maintenance

### Industry compliancy

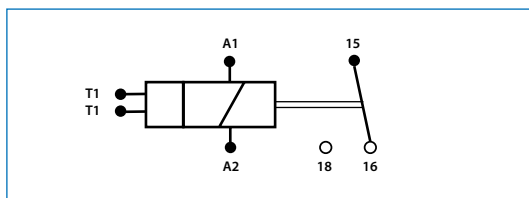
All our relays and accessories are designed according to regulations:

- EN 60255-6
- EN 61010-1
- EN 61812-1
- CE

# XT-35M-DCL1 relay

## Technical specifications

### Connection diagram



### Time circuit

Power back-up	3 years
Accuracy	Max $\pm 1$ s / day at 23°
Minimum interval	1 min
Data stored for	Min. 10 years
Illumination range	1 - 5000 lux
Summer / winter time	Automatic

### Program circuit

Number of memory places	100
Programs	Daily, weekly
Data readout	LCD display, with backlight

### Output

Number of contacts	1 C/O change over / DPDT (AgSnO <sub>2</sub> )
Rated current	8 A / AC1
Breaking capacity	2500 VA / AC1, 240 W / DC
Inrush current	10 A / < 3 s
Switching voltage	250 V AC1 / 24 VDC
Min. breaking capacity DC	500 mW
Mechanical life	1 x 10 <sup>7</sup> operations
Electrical life (AC1)	1 x 10 <sup>5</sup> operations

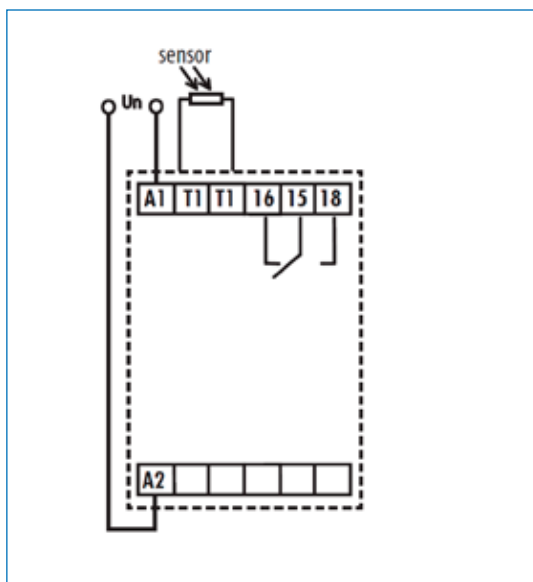
### Supply

Supply terminals	A1 - A2
Supply voltage (µn)	230 VAC 50/60 Hz
Supply indication	Green LED
Consumption	Max. 3.5 VA
Supply voltage tolerance	0.85...1.1 Un

# XT-35M-DCL1 relay

## Technical specifications

### Connection



### Environmental conditions

Operating temperature	-20 °C...+55 °C
Storage temperature	-30 °C...+70 °C
Electrical strength	4 kV (supply output)
Operating position	Any
Mounting	35 mm rail EN 60715
Protection degree	IP20
Oversoltage category	III
Pollution degree	2
Max. cable size	Solid wire max. 1 x 2.5 or 2 x 1.5 mm <sup>2</sup> / with sleeve max. 1 x 1.5 mm <sup>2</sup>

### Mechanical data

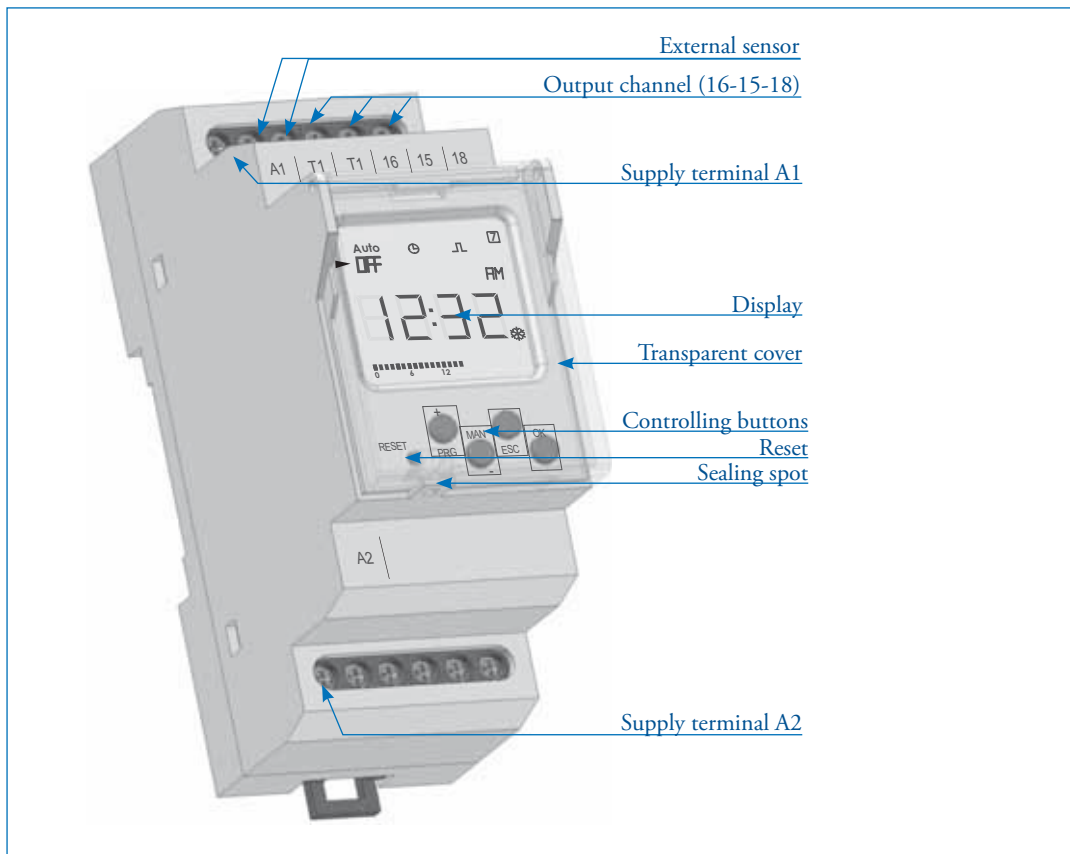
Dimensions (d, w, h)	90 x 35 x 64 mm
Weight	110 g relay 20 g sensor
Standards	EN 61812-1, EN 61010-1, EN 60255-6



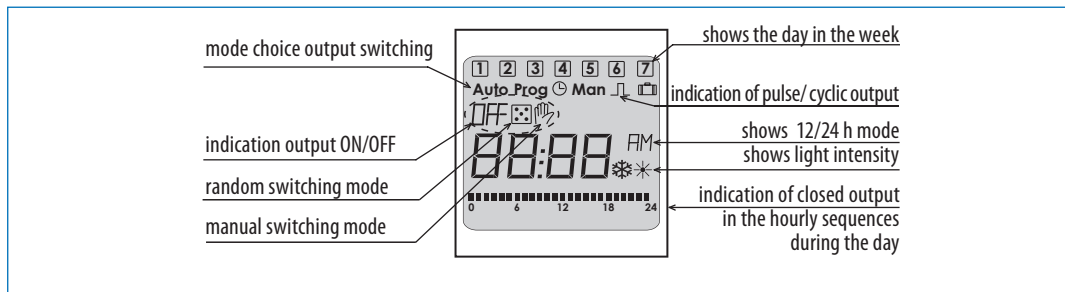
# XT-35M-DCL1 relay

## Technical specifications

### Description



### LCD display description



# XT-35M-DCL1 relay

## Ordering codes

Art. no.	Type	Time range	Function	Contacts	Voltage range
326001001	XT-17M-A1	0.1 - 1 s	Delay-on	1 C/O	12 - 240 VAC/DC, 50/60 Hz
326001009	XT-17M-A2	1 - 10 s	Delay-on	1 C/O	12 - 240 VAC/DC, 50/60 Hz
326001010	XT-17M-A3	6 - 60 s	Delay-on	1 C/O	12 - 240 VAC/DC, 50/60 Hz
326001011	XT-17M-A4	1 - 10 min	Delay-on	1 C/O	12 - 240 VAC/DC, 50/60 Hz
326001012	XT-17M-A5	6 - 60 min	Delay-on	1 C/O	12 - 240 VAC/DC, 50/60 Hz
326001013	XT-17M-A6	1 - 10 h	Delay-on	1 C/O	12 - 240 VAC/DC, 50/60 Hz
326001002	XT-17M-B1	0.1 - 1 s	Delay-off	1 C/O	12 - 240 VAC/DC, 50/60 Hz
326001014	XT-17M-B2	1 - 10 s	Delay-off	1 C/O	12 - 240 VAC/DC, 50/60 Hz
326001015	XT-17M-B3	6 - 60 s	Delay-off	2 C/O	12 - 240 VAC/DC, 50/60 Hz
326001016	XT-17M-B4	1 - 10 min	Delay-off	2 C/O	12 - 240 VAC/DC, 50/60 Hz
326001017	XT-17M-B5	6 - 60 min	Delay-off	2 C/O	12 - 240 VAC/DC, 50/60 Hz
326001018	XT-17M-B6	1 - 10 h	Delay-off	2 C/O	12 - 240 VAC/DC, 50/60 Hz
326001003	XT-17M-C1	0.1 s - 10 d	Multifunction	1 C/O	12 - 240 VAC/DC, 50/60 Hz
326001004	XT-17M-C3	0.1 s - 10 d	Multifunction	3 C/O	12 - 240 VAC/DC, 50/60 Hz
326001025	XT-17M-C1/6	0.1 s - 10 h	Multifunction	1 C/O	24 - 240 VAC, 50/60 Hz or 24 VDC
326001019	XT-17M-D	0.1 s - 10 min	Delay off*	2 C/O	12 - 240 VAC/DC, 50/60 Hz
326001020	XT-17M-L	-	Latching	2 C/O	12 - 240 VAC/DC, 50/60 Hz
326001005	XT-17M-P	0.1 s - 100 d	Recycler	1 C/O	12 - 240 VAC/DC, 50/60 Hz
326001006	XT-17M-S	0.1 s - 100 d	Star-delta	2 C/O	12 - 240 VAC/DC, 50/60 Hz
326001021	XT-17M-2XA	0.1 s - 10 d	Delay-on	2 C/O	12 - 240 VAC/DC, 50/60 Hz
326001026	XT-35M-DC2	Weekly	Digital time	2 C/O	12 - 240 VAC/DC, 50/60 Hz
<b>326001028</b>	<b>XT-35M-DCL1</b>	<b>Daily - weekly</b>	<b>Digital twilight switch</b>	<b>1 C/O</b>	<b>230 VAC, 50/60 Hz</b>

\* without auxiliary supply





Mors Smitt France SAS  
Tour Rosny 2, Avenue du Général de Gaulle,  
F - 93118 Rosny-sous-Bois Cedex, FRANCE  
T +33 (0)1 4812 1440, F +33 (0)1 4855 9001  
E sales@msrelais.com

Mors Smitt Asia Ltd.  
# 807, Billion Trade Centre, 31 Hung To Road  
Kwun Tong, Kowloon, HONG KONG SAR  
T +852 2343 5555, F +852 2343 6555  
E info@morssmitt.hk

Mors Smitt B.V.  
Vrieslantlaan 6, 3526 AA Utrecht,  
NETHERLANDS  
T +31 (0)30 288 1311, F +31 (0)30 289 8816  
E sales.msbv@wabtec.com

Mors Smitt Technologies Inc.  
1010 Johnson Drive,  
Buffalo Grove, IL 60089-6918, USA  
T +1 847 777 6497, F +1 847 520 2222  
E salesmst@wabtec.com

Mors Smitt UK Ltd.  
Doulton Road, Cradley Heath  
West Midlands, B64 5QB, UK  
T +44 (0)1384 567 755, F +44 (0)1384 567 710  
E sales.msuk@wabtec.com



[www.morssmitt.com](http://www.morssmitt.com)

(c) Copyright 2013

All rights reserved. Nothing from this edition may be multiplied, or made public in any form or manner, either electronically, mechanically, by photocopying, recording, or in any manner, without prior written consent from Mors Smitt. This also applies to accompanying drawings and diagrams. Due to a policy of continuous development Mors Smitt reserves the right to alter the equipment specification without notice. Nothing from this edition may be multiplied, or made public in any form or manner, either electronically, mechanically, by photocopying, recording, or in any manner, without the written consent from Mors Smitt. This also applies to accompanying drawings and diagrams. Due to a policy of continuous development Mors Smitt reserves the right to alter the equipment specification and description outlined in this datasheet without prior notice and no part of this publication shall be deemed to be part of any contract for the equipment unless specifically referred to as an inclusion within such contract.